



Dr. SOS

Immediate Action For Emergency
The Kit for the easy removal of Broken Abutment Screw
Regeneration of damaged internal threads in the fixture



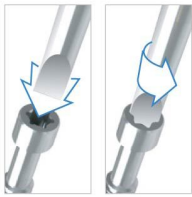
Dr.SOS

Immediate Action For Emergency!

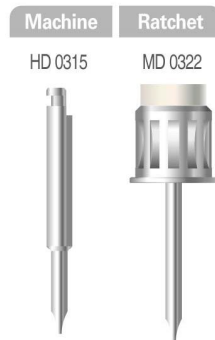
The Kit for the easy removal of Broken Abutment Screw
Regeneration of damaged internal threads in the fixture

1 0.3 Slot Driver

When Torx Abutment Screw Head was damaged, you can use 0.3 Slot Driver instead of 1.7 Torx Driver.



1.7 Torx Abutment Screw



6 Screw Tapping

When internal threads in the fixture were damaged, use Screw Tapping to regenerate fixture internal threads.



| Screw | Ø1.6 | Ø1.8 | Ø2.0 | Ø2.5 |
|--------------------------------|--------|--------------|-------------------------------------|------|
| External Fixture | Narrow | | Regular TWide | Wide |
| Non Submerged Internal Fixture | | | Internal Fixture (PSI, IFI) | |
| Submerged Internal Fixture | | SM Narrow | SM Regular SM Wide Extra Wide | |

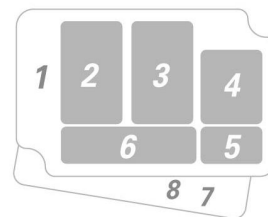
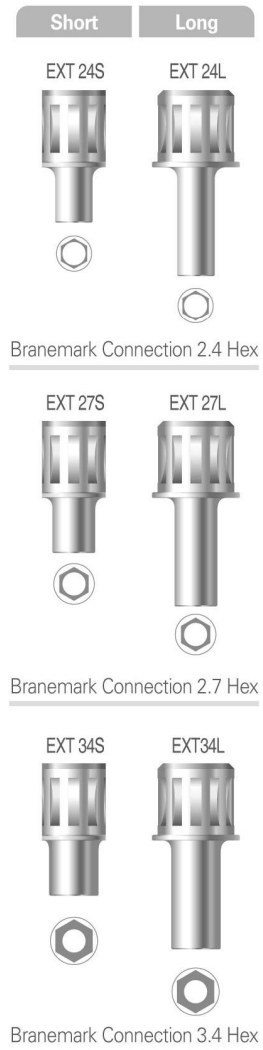
2 External Guide

External Connection

It is connected to fixture and guides through Remove Bar to enter and support broken abutment screw.



External Hex



8 Handle



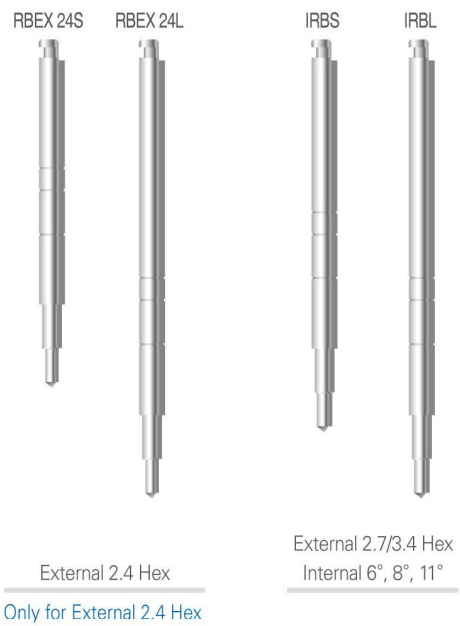
3 Internal Guide

Internal Taper Connection

It is connected to fixture and guides through Remove Bar to enter and support broken abutment screw.



4 Remove Bar



5 Reverse Cutting Drill

Connect the Reverse Cutting Drill to low speed handpiece, with 1,000~2,000 RPM in reverse rotation. Then, repeat drilling up and down to grind and change the top of the broken screw.

***CAUTION:**
Be careful not to break it with overheating.



7 Ratchet Wrench

DRW 050

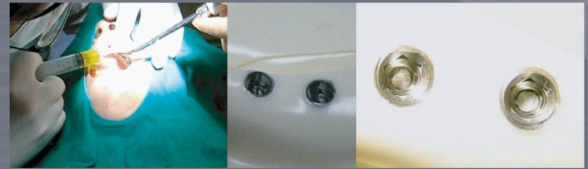


Immediate Action For Emergency, Dr. SOS

- + The Kit for the easy removal of Broken Abutment Screw
- + Regeneration of damaged internal threads in the fixture

Ready

After cleaning thoroughly broken screw area, repeat inserting oral-use oil to let the broken screw out.



Guide Fixing

Locate a proper guide from the "Dr.SOS Kit" onto a fixture inside mouth and support it securely to make it vertical.

*You can use ratchet to support the guide when it's hard to support the guide by hand.



A) Remove Bar

Connect Remove Bar to the Handle, reverse it by hand to remove the Broken Abutment Screw, and be careful not to drop off the product into the mouth.

*Confirm the level of line on the Remove Bar.



B) Remove Bar + Handpiece

After connecting the Remove Bar into low speed handpiece, it is also possible to remove it with reverse rotation of low RPM.

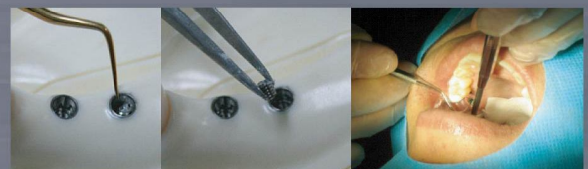
*less than 25 RPM.

*Remove Bar and drill extension connection enables a longer use.



Explore

Use explore to completely remove it after reaching certain height.



Screw Tapping

When fixture internal threads were damaged, use Screw Tapping to regenerate fixture internal threads and connect Abutment.



TIP)

When pulling, hand will feel it touches.
If no touch on hands, lean guide and bur left and right until getting feel.